

Sample Figures of Temperature Distribution

- A circular domain with a circular hole at the center was considered.
- The shape of model was a quarter of circular area.
- The edge of center hole had the boundary condition of given temperature, another parts had adiabatic boundary conditions.
- Temperature change of $\pm 10^\circ\text{C}$ which has the period of 1 year was given at the edge of center hole.

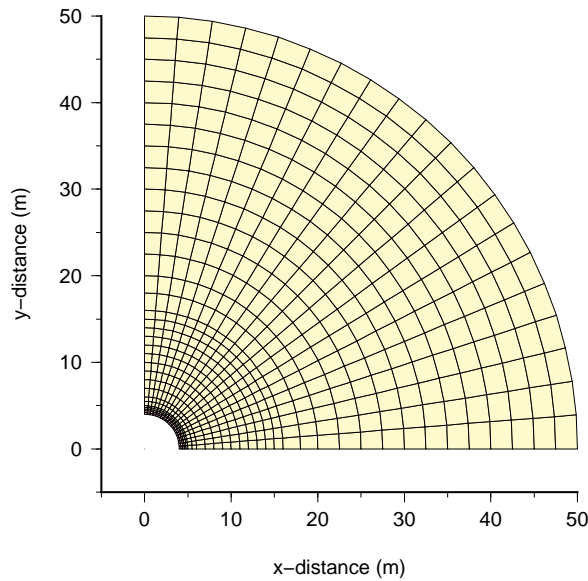


Fig.1 Mesh for FEM

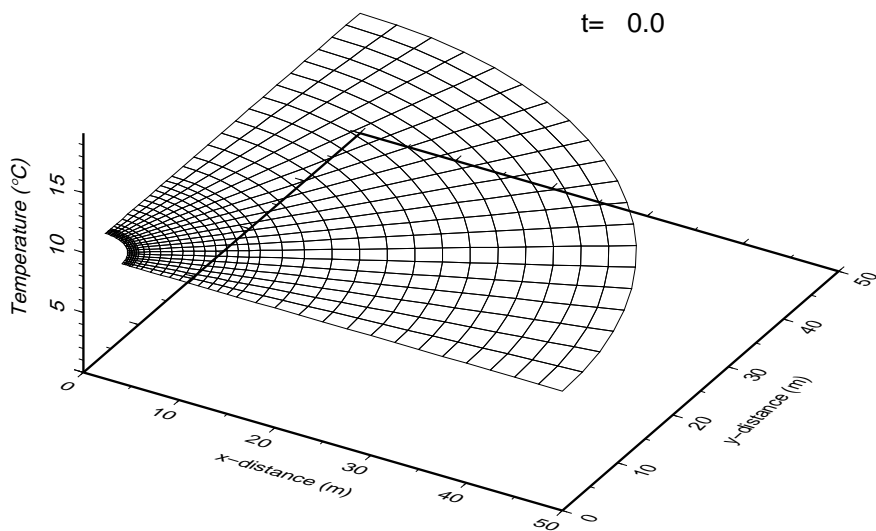


Fig.2 Initial state (uniform temperature: 10°C)

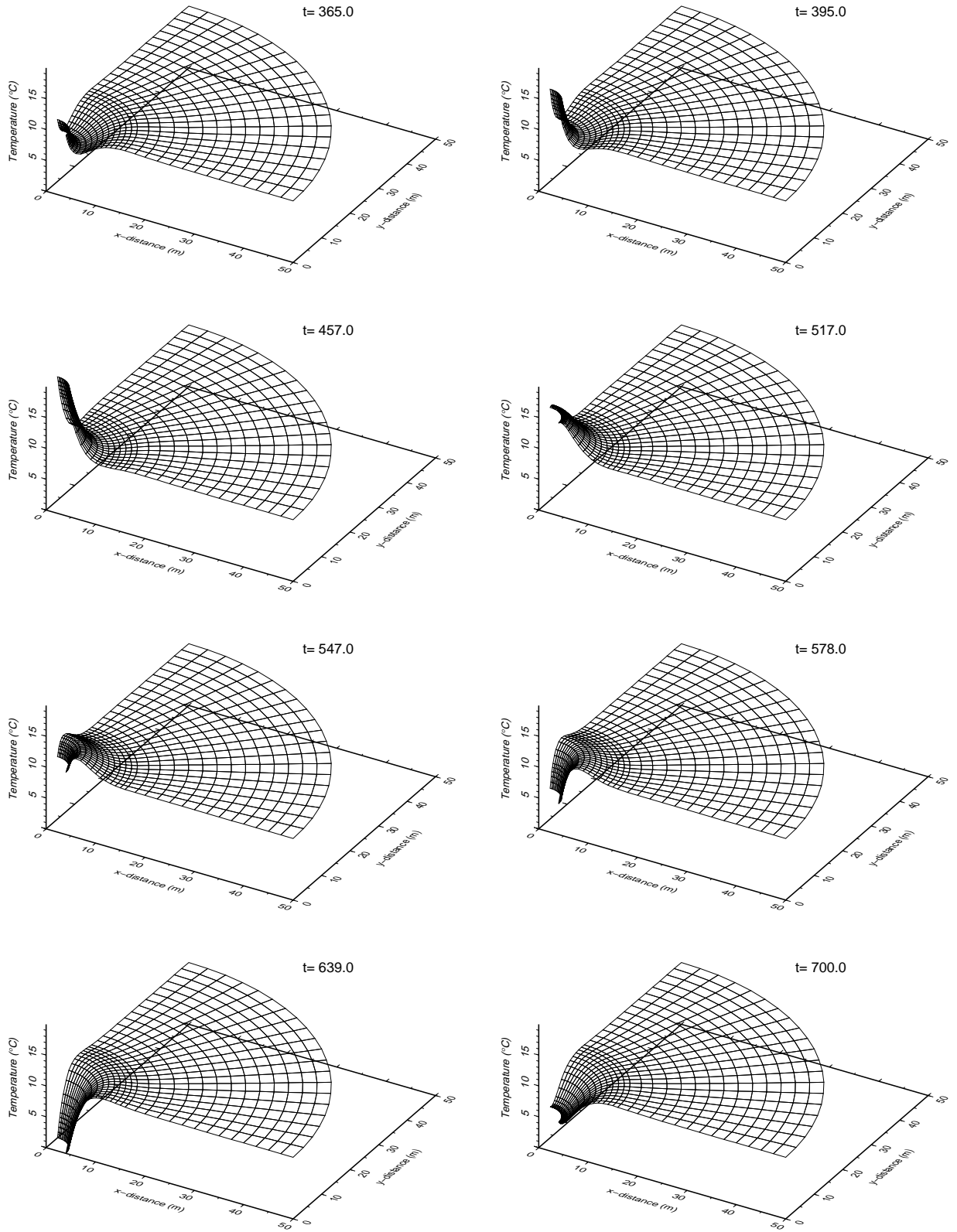


Fig.3 Temperature distribution at the specified time step (unit of 't': day)